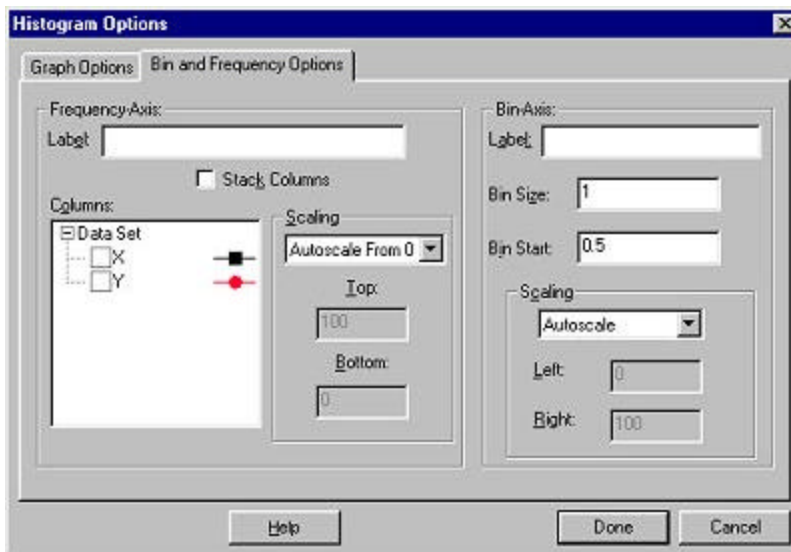


# Bin and Frequency Options Tab

The Bin and Frequency Options Tab allows you to select which columns are plotted and how they are scaled. You can also bring up this box by double-clicking on the graph's axis label.



## Frequency-Axis

### Label:

With this dialog box, you can change the label name.

### Columns:

Choose which columns will be plotted.

### Stack Columns:

Select this option to display the columns stacked upon each other instead of side-by-side.

### Scaling:

**Autoscale Larger (Default):** The graph won't get smaller when new points are added. If a new point is off the graph, then the graph will be enlarged to include it.

**Autoscale:** The software will choose a range for the axis, based on the data being plotted.

**Autoscale at 0:** This option is similar to Autoscale except that one of the endpoints of the axis will be at zero and the other one will be set based on the data.

**Manual Scaling:** In this mode, you can choose both endpoints of the axis. Enter the minimum and maximum values to plot in the text boxes under this option.

**Top:** Manually enter the maximum value you wish to show on your

graph (disabled if autoscaling is chosen).

**Bottom:** Manually enter the minimum value you wish to show on your graph (disabled if autoscaling is chosen).

---

## Bin-Axis

### Label:

With this dialog box, you can change the name.

### Bin Size:

On a histogram the range of values along the X-axis is divided into equal "bins". The number of points in each bin is counted and displayed along the Y-axis. With the Bin Size option you can determine the size of each bin. (Note: Be careful when selecting the bin size. If you choose a large size, many different data points will fall into each bin, possibly hiding the actual distribution of the data. If you choose a small size, each bin will contain only a few data points which also can obscure the distribution of the data.)

### Bin Start

Left/Right may not result in appropriate bin boundaries so Bin Start allows you to specify the left edge of the first bin boundary and the right edge of the last bin boundary.

### Scaling:

The scaling option in the Bin and Frequency window controls how the limits of the graph are set. There are three scaling options available:

**Autoscale:** The software will choose an appropriate range for the axes, based on the data being plotted.

**Manual:** In this mode, you can choose both endpoints of the axis. Enter the minimum and maximum values to plot.

**Max:** Manually enter the maximum value you wish to show on your graph (disabled if autoscaling is chosen).

**Left:** Manually enter the minimum value you wish to show on your graph (disabled if autoscaling is chosen).

**Right:** Manually enter the maximum value you wish to show on your graph (disabled if autoscaling is chosen).

---

*Tip: To quickly change the axis range, click on an [end point](#) value of the axis. A box then appears in which you can enter a new value.*

See Also:

[Histogram Graph Options tab](#)